

**CMS** is a powerful crisis management software application designed for use by marine emergency response managers to input and display the situational information as well as to model the 3D trajectory, fate, impacts and biological effects of a spill or disaster.

### APPLICATIONS FOR CMS INCLUDE:

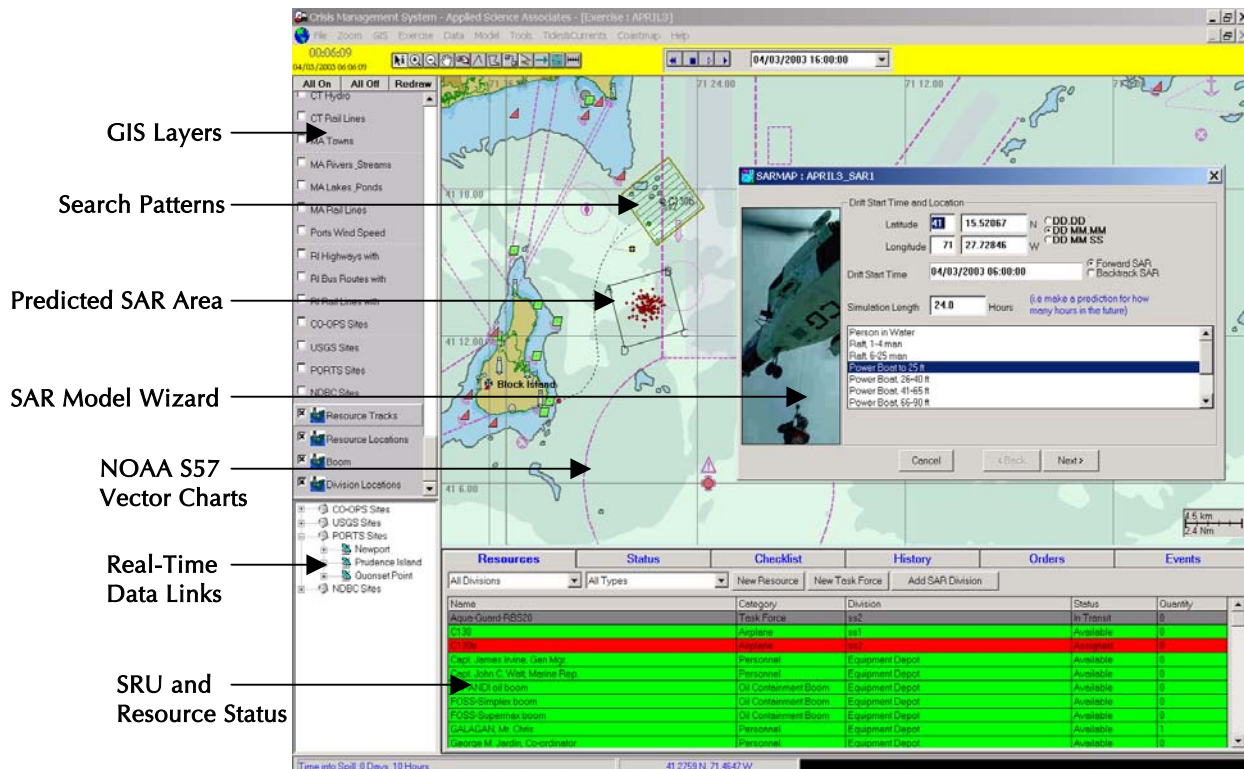
- Training and Simulation
- Real-Time Response
- Cost-Benefit Analysis
- Contingency Planning



### ALL OF THE FOLLOWING CAN BE HANDLED WITHIN 1 RESPONSE MANAGEMENT INTERFACE:

- Oil Spill
- Chemical Spill
- Search & Rescue
- Marine Emergency
- Nuclear Disaster

THE RESPONSE MANAGEMENT COMPONENT IS BASED ON THE OSC2 APPLICATION THAT ASA DEVELOPED FOR THE UNITED STATES COAST GUARD, AND REPRESENTS AN ELECTRONIC IMPLEMENTATION OF THE ICS (INCIDENT COMMAND SYSTEM).



**GIS Layers** →

**Search Patterns** →

**Predicted SAR Area** →

**SAR Model Wizard** →

**NOAA S57 Vector Charts** →

**Real-Time Data Links** →

**SRU and Resource Status** →

Resources		Status	Checklist	History	Orders	Events
Name	Category	Division	Status	Quantity		
Robert Guard RB520	Tank Force	132	In Transit	0		
0136	Personnel	141	Available	0		
0136	Personnel	142	Assigned	0		
Capt. James Irvine, Gen Mgr	Personnel	Equipment Depot	Available	0		
Capt. John C. Watt, Marine Rep.	Personnel	Equipment Depot	Available	0		
NECI oil boom	Oil Containment Boom	Equipment Depot	Available	0		
FOSS-Simplex boom	Oil Containment Boom	Equipment Depot	Available	0		
FOSS-Supermax boom	Oil Containment Boom	Equipment Depot	Available	0		
GALANGAN Mt. Tires	Personnel	Equipment Depot	Available	0		
George M. Jardo, Coordinator	Personnel	Equipment Depot	Available	0		



## FEATURES:

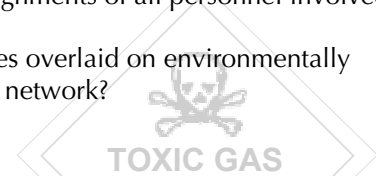
- Network environment running in training or real-time response mode enables efficient communication between stations.
- Individual computers, on a network, may represent an ICS function such as Planning, Logistics, Finance, & Operations.
- Interactive map and electronic forms instantly available to each responder.
- GIS applied to anywhere in the world.
- Real-time resource management database with ability to enter, request, and assign response resource status and assignments.
- Deployed resources can be selected from a database containing personnel and response resources for the area of concern.
- Status and location change for every resource deployed in the exercise or response is continually recorded.
- Reports, paper forms, and maps, as well as poster size Status Boards can be automatically generated.
- Student performance during training mode may be monitored in real-time or evaluated in a post-analysis debriefing session.

## CMS HIGHLIGHTS

- ▶ ICS-based
- ▶ Resource management
- ▶ Response strategies (oil booming, dispersant, skimming, etc.)
- ▶ Evacuation
- ▶ Damage Reports
- ▶ GIS interface
- ▶ Uses S57 Electronic Navigation Charts (ENC)
- ▶ Real-time environmental data integration
- ▶ Remote communication (wireless)
- ▶ Automated Web-based publishing
- ▶ Hydrodynamic model integration

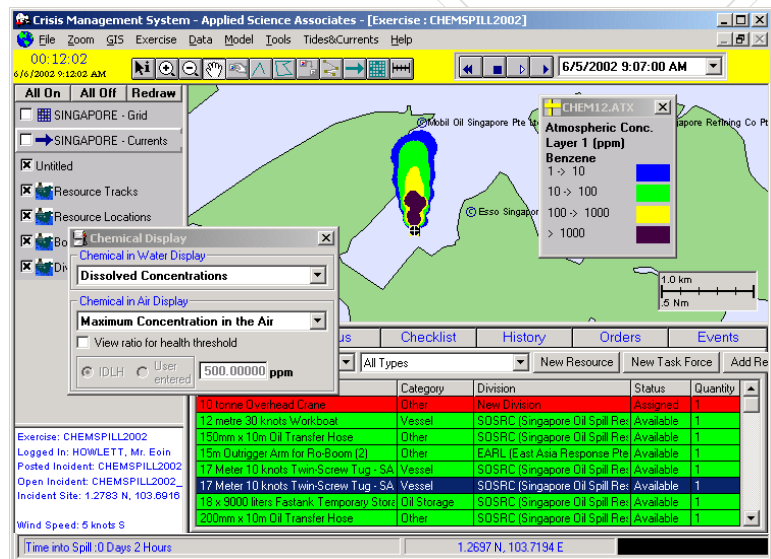
## SOME CONCERNS THAT CAN BE QUICKLY ADDRESSED:

- What is the length and location of a deployed boom?
- What are the status and work assignments of all personnel involved in the response?
- How are all the response resources overlaid on environmentally sensitive areas and the local road network?



## CMS COMPONENTS MAY BE ADDED OR REMOVED TO CONFIGURE ANY SYSTEM

- ▶ GIS
- ▶ Oil Spill model and management system (OILMAP)
- ▶ Chemical (marine and atmospheric) spill model and management system (CHEMMAP)
- ▶ Search & Rescue model and management system (SARMAP)
- ▶ Marine Emergency Management system (MEMS)
- ▶ Nuclear explosion model and management System (NUCLEARMAP)



**Headquarters:**  
 Narragansett, RI  
 Phone: 401-789-6224  
 Fax: 401-789-1932  
 asa@appsci.com  
 www.appsci.com

**Worldwide Offices:**  
 Castetbon, France  
 St. Andrews, Scotland  
 São Paulo, Brazil  
 Gold Coast, Australia  
 Perth, Australia